

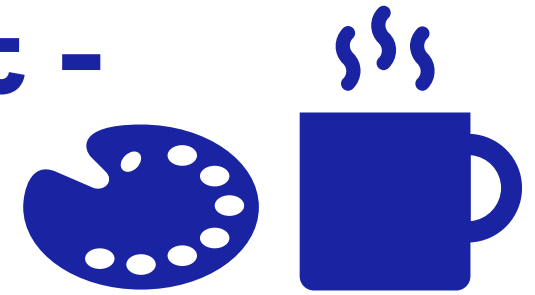
Peers2Pals February 2025



Key WAM Bracknell Slough Online

| w/c | Monday | Tuesday | Wednesday | Thursday | Friday |
|------------------|--------|---------|---|--|--|
| 27 th | | | | | |
| 3 rd | | | 11:00 – 12:30 Peers2Pals Coffee & Arts/craft @ Slough (17-25 year old) | | |
| 10 th | | | | | |
| 17 th | | | | 14.00-15.30 Connecting Minds & Peers2Pals @ Bracknell [17-35 years] | |
| 24 th | | | | | 17.30-18.30 Connecting Minds & Peers2Pals Games Bracknell [17-35 years] |

Peer2Pals Coffee and Arts/craft - Slough



Date and time: Wednesday 5th February @ 11:00 to 12:30

Cost: Refreshments

Age: 17-25

Run by Husna from Peers2Pals/Friends in Need Slough

[For more info please email Husna husna.younis@bucksmind.org.uk](mailto:husna.younis@bucksmind.org.uk) Tel: 07385 687455

Connecting Minds and Peers2Pals Coffee & Chat - Bracknell



Date and time: Thursday 20th February @ 2.00pm-3.30pm

Cost: Buy refreshments

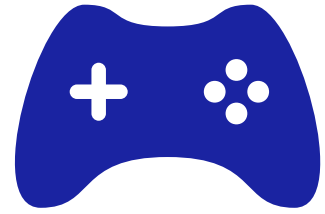
Age: 17-35

Partnership activity: Run by Bracknell Forest Community Network and Chloe from Peers2Pals/Friends in Need Bracknell

[For more info please email Chloe \(chloe.benn@bucksmind.org.uk\)](mailto:chloe.benn@bucksmind.org.uk)



Connecting Minds and Peers2Pals Games Night - Bracknell



Date and time: Friday 28th February @ 5.30pm-6.30pm

Cost: £11.95pp

Age: 17-35

Partnership activity: Run by Bracknell Forest Community Network and Chloe from Peers2Pals/Friends in Need Bracknell

[For more info please email Chloe \(chloe.benn@bucksmind.org.uk\)](mailto:chloe.benn@bucksmind.org.uk)

Peers2Pals

Who's it for?

- Age: Young Adults aged between 17 – 25 years old.
- Connecting Minds (partnership activities with the Bracknell Forest Community Network) are for anyone aged between 17 – 35 years.
- Anybody living with a mental health condition and/or stress, loneliness and social isolation, and would like to improve this through peer support.
- Area: Living in the East Berkshire area or registered with an East Berkshire GP (Bracknell, WAM, Slough).



Peers2Pals

What we offer:

- Fun and friendly peer support and social activities.

For example: quiz nights, bowling, picnics and more!

- Opportunities for young adults to connect with peers who understand how they feel.
- Social and uplifting support in a safe, confidential and non-judgmental setting.



Peers2Pals

New Member joining process:

- 1) Informal chat with your FiN/Peers2Pals area coordinator
- 2) If we are the right support for you, we will help you in completing our welcome & demographics form over the phone, in person or via email.
- 3) Once this has been completed, your coordinator will send you the welcome pack, timetable and zoom links. If you are over 18, we will also send you access to the General Friends in Need activities..

Further information:

- Individuals aged 18 and over can join in Friends in Need (FiN) activities/groups. The general FiN group has a variety of members and ages, whereas the Peers2Pals and Connecting Minds activities are specifically geared towards young adults.



Join our closed/private Facebook group for members!
<https://www.facebook.com/groups/381070622926558>



Peers2Pals February 2025

Links to Sport in Mind East Berkshire Activities for anyone aged 17 and over: <https://www.sportinmind.org/berkshire2>

WAM and Slough: FREE activities such as Yoga, Mindfulness Walks, Badminton and Table Tennis and Tai Chi.

Bracknell: Cricket, Football, Walks, Badminton and Table Tennis, Yoga and Tai Chi.

Please click on the link for all SiM activities in your area or visit www.sportinmind.org

Contact for more information:

Matt Saunders

Sport In Mind

Development Officer (East Berkshire and Bucks)

Mobile 07823 973782

Office 0118 9479762

Matt Saunders @ 07823 973782

or email matthew.saunders@sportinmind.org

Contact us!

- Team Lead: Ansa Khan
Email: ansa.khan@bucksmind.org.uk
Tel: 07496 874882
- Bracknell Coordinator: Chloe Benn
Email: chloe.benn@bucksmind.org.uk
Tel: 07443 715522
- Slough Coordinator: Husna Younis
Email: husna.younis@bucksmind.org.uk
Tel: 07385 687455

